

Lab ARMOR[®] CHILL BUCKET™

A Waterless Solution That Protects Your Lab Work.

The Chill Bucket™ makes it easy to run your experiments without risking contamination from wet ice. Now you can cool everything ice-free; Lab Armor® Beads power the new Chill Bucket.

From 4°C to -20°C, the Chill Bucket delivers up to 4 hours of constant cooling on one ice pack or with a handful of dry ice pellets.



Part ID / SKU	Product	Description
67200-001	CHILL BUCKET™ with Beads	Chill Bucket, two Chill Packs, and a Bead Bag with 2 L Beads.
67200-005	CHILL BUCKET™ Kit	Chill Bucket, two Chill Packs, and a Bead Bag. NO BEADS.
67200-200	CHILL PACKS™	Four Chill Packs.
67200-002	CHILL BUCKET™ BAG Kit	Bead Bag with 2 L Beads and two Chill Packs.

The Chill Bucket™ gives you amazing new ways to cool samples while keeping them dry and contamination-free. **Its so cool, you'll never use ice again!**



DRY BEADS ARE A BETTER SOLUTION THAN WET ICE

- **Vessels stay dry and in place.** Keep samples organized. Avoid water puddles and float-away tubes.
- **Get greater temperature flexibility.** Use Chill Packs or dry ice. Use ambient or cold beads.
- **Save on energy-consuming ice machines.** The Chill Bucket can replace ice wherever ice is used.

HERE'S HOW IT WORKS

Cool the Bead Bag and Chill Packs in your refrigerator or freezer. Then assemble the Chill Bucket with the Chill Packs on bottom.

Use the bucket and Chill Packs at 0°C-8°C or substitute the Chill Packs with dry ice for -20 °C temperatures, or you can even create your own custom temperature range by starting with beads at ambient or cooled to 4°C, -20°C, or -80°C.

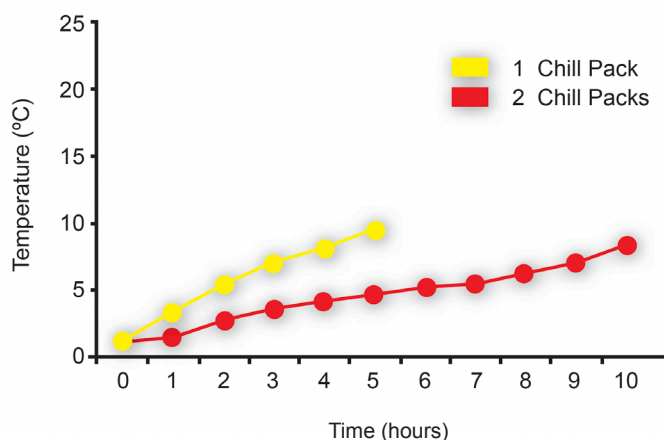


So Smart. So Cool.

PERFORMANCE SPECIFICATIONS

The Chill Bucket can maintain cold temperatures for 4 or more hours with one Chill Pack.

If you need up to 8 or more hours of cold, simply add a second Chill Pack to the bucket.



Technical Support

For additional product and technical information, such as product manuals or technical articles on the use of Lab Armor Beads and the Chill Bucket for common laboratory applications, please visit labarmor.com. For further assistance, please email us at labarmor@sheldonmfg.com.

www.labarmor.com | labarmor@sheldonmfg.com | +1 (503) 640-3000 | +1 (800) 322-4897 (U.S. Toll-Free)

Notifications

The trademarks mentioned herein are the property of Lab Armor, LLC. Lab Armor® Beads are patented. For laboratory use only. Not for personal use. © 2010-2025 Lab Armor. All rights reserved.

CHILL BUCKET

- Four-liter capacity
- Polyurethane construction
- Durable & lightweight
- Shaped to balance in one arm
- Molded side knobs
- Includes lid
- Condensation free
- Hand wash with mild detergent, towel dry
- 7.0 x 10.5 x 7.0" (H x W x D)
- 17.8 x 26.7 x 17.8 cm (H x W x D)

CHILL PACKS

- Durable rubbermaid gel pack
- Lasts for hours
- Reusable; freeze and reuse
- Non-toxic

BEAD BAG

- Durable nylon mesh fabric
- See-through for visibility
- Washable
- Mildew and rot-resistant
- Drawstring closure
- 17.25 x 12.5 x 12.25" (H x W x D)
- 44 x 32 x 31cm (H x W x D)